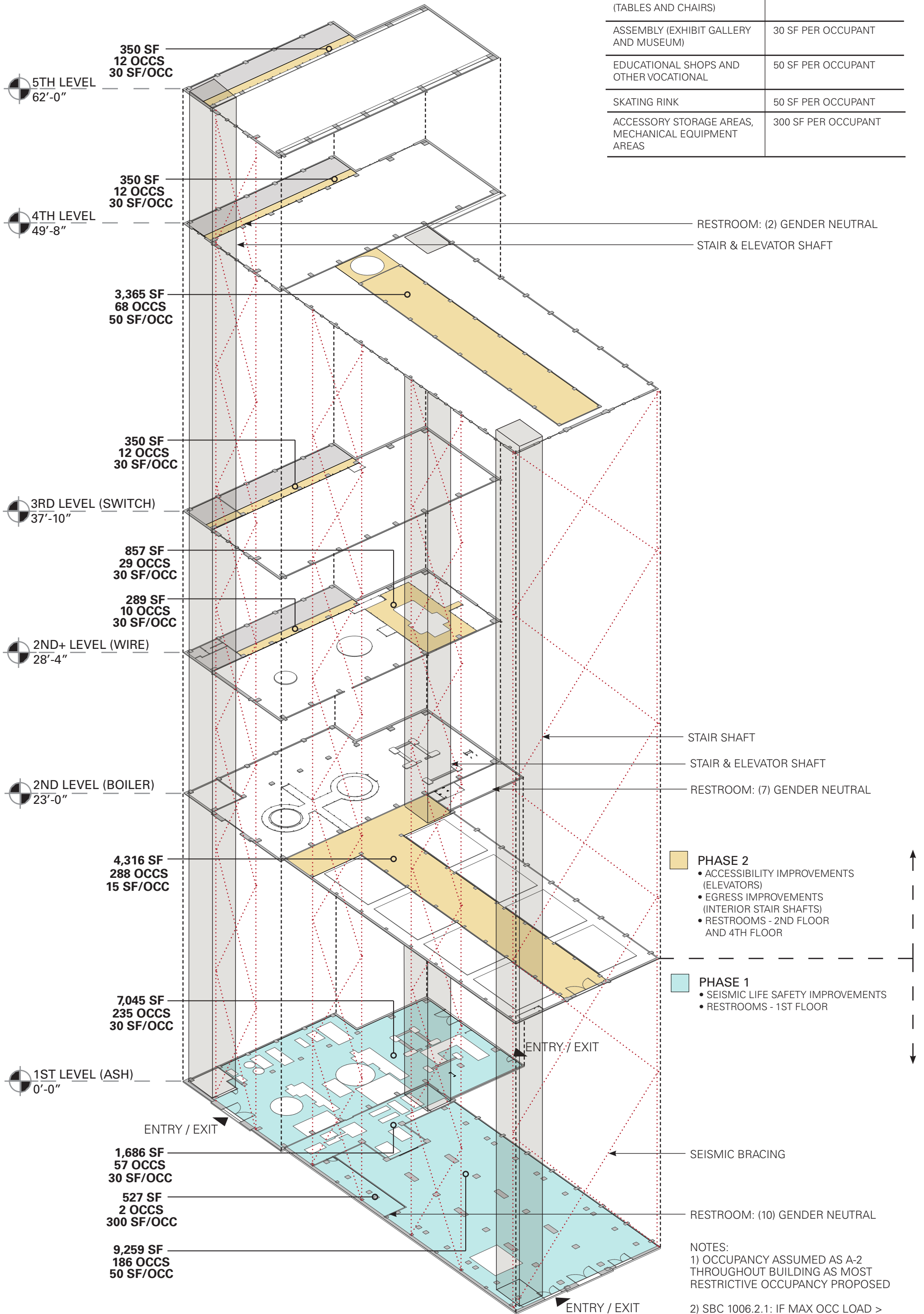
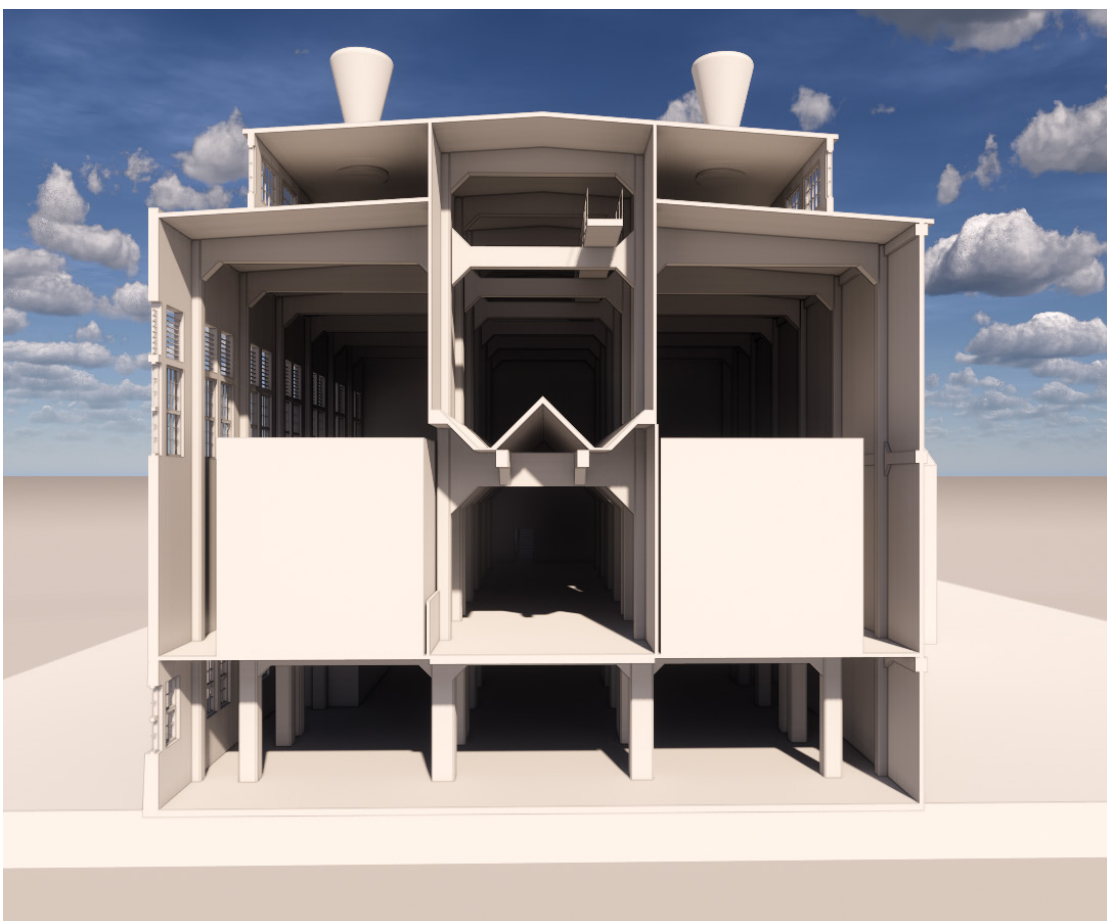
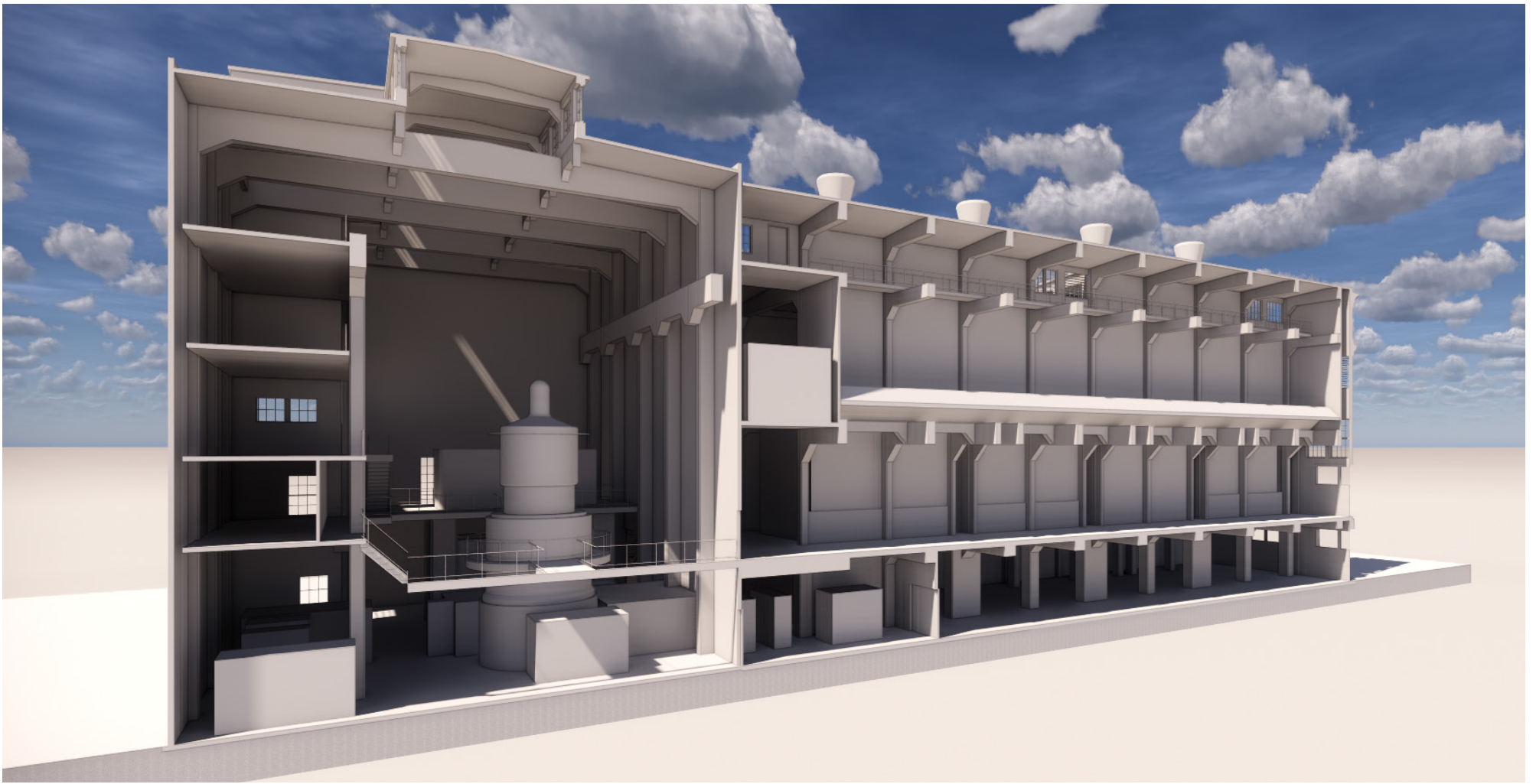


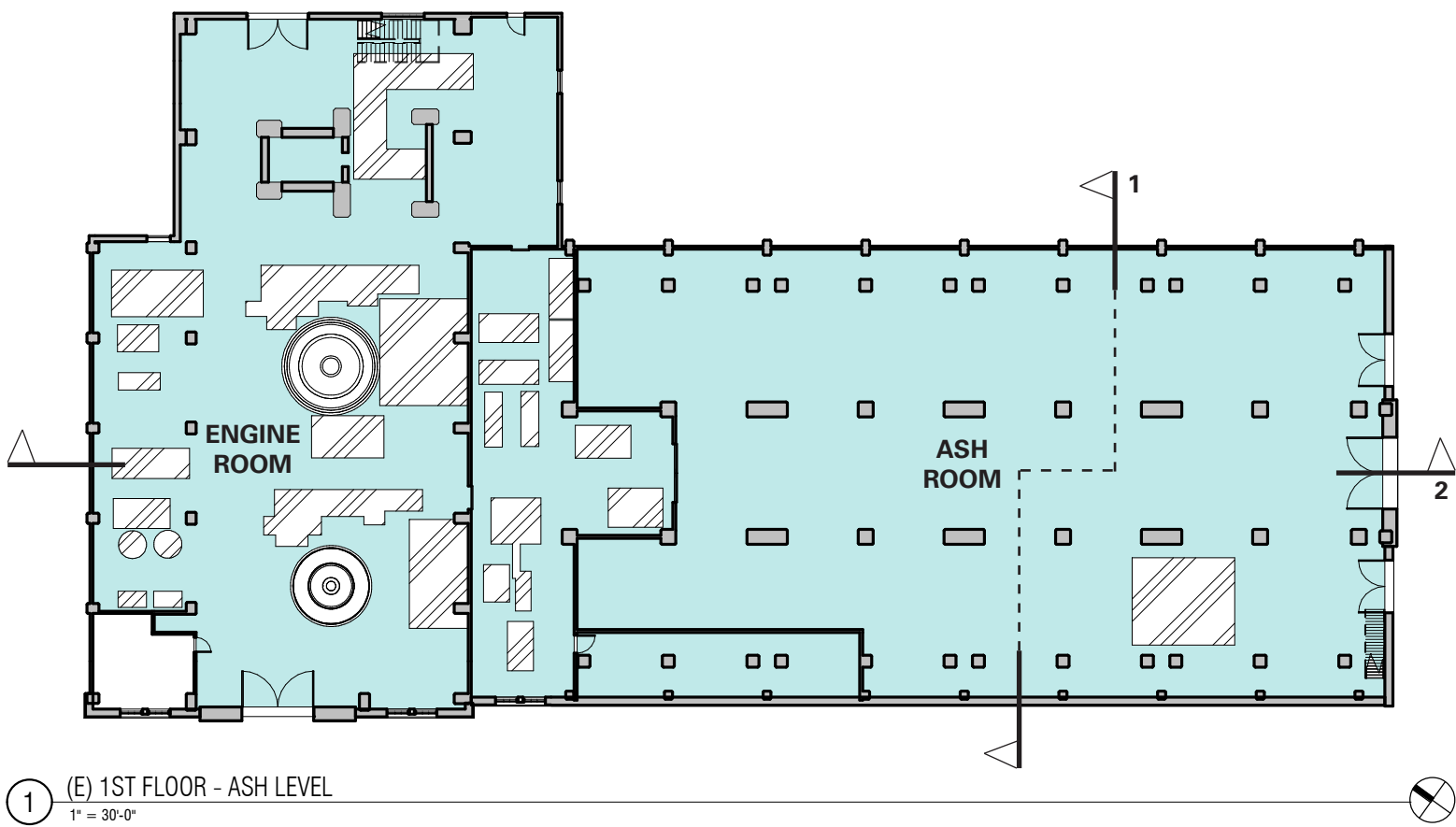
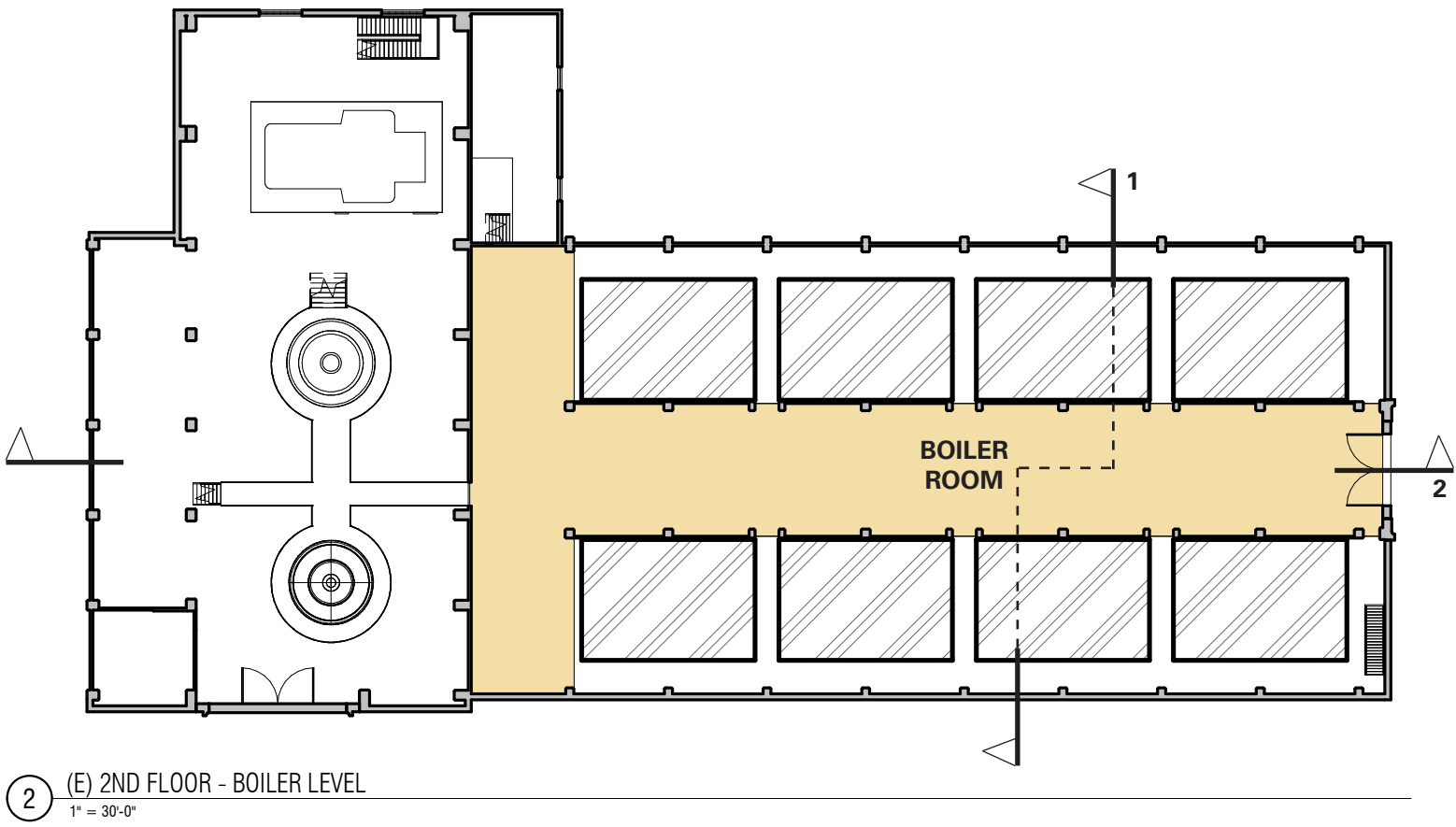
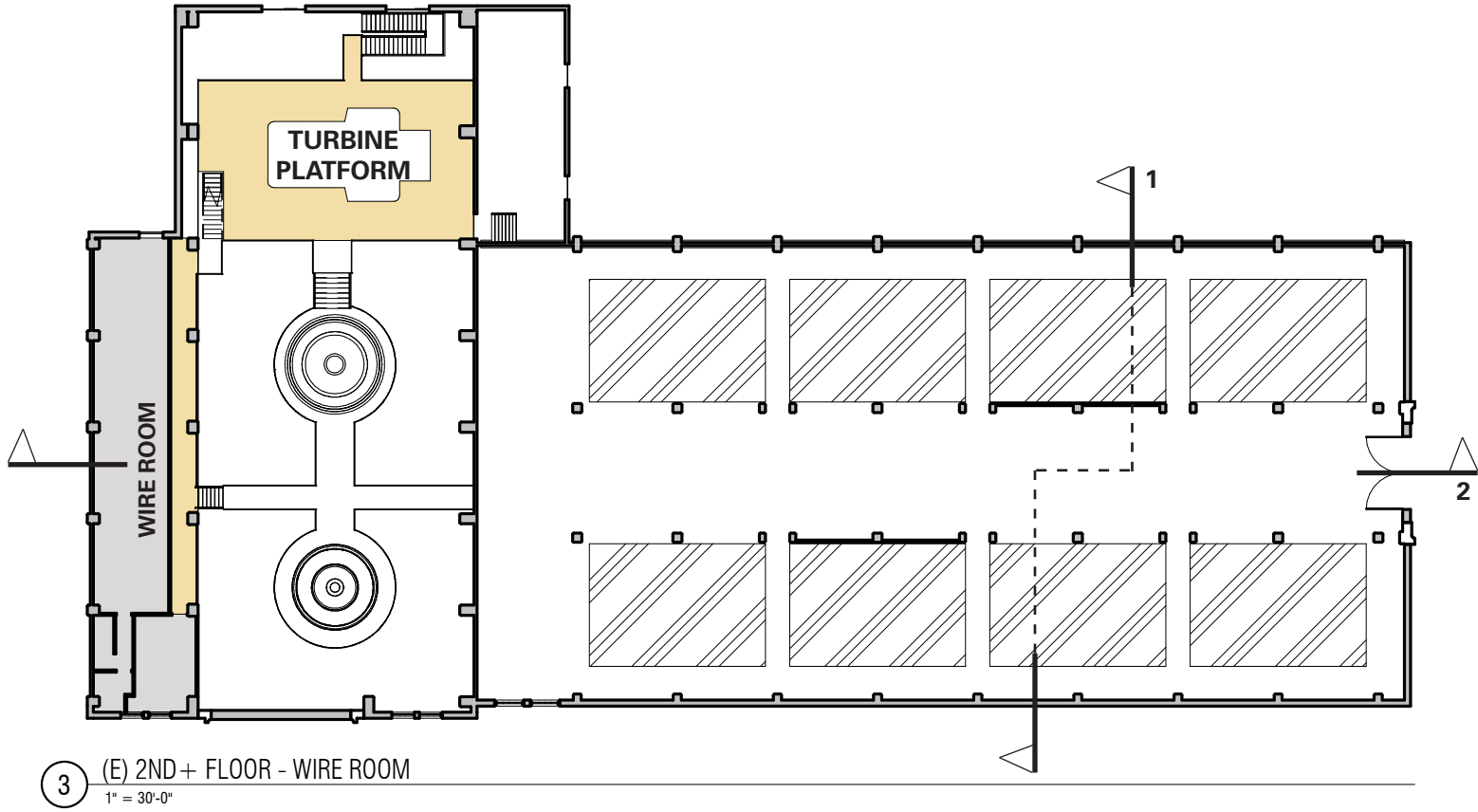
PHASED DEVELOPMENT APPROACH

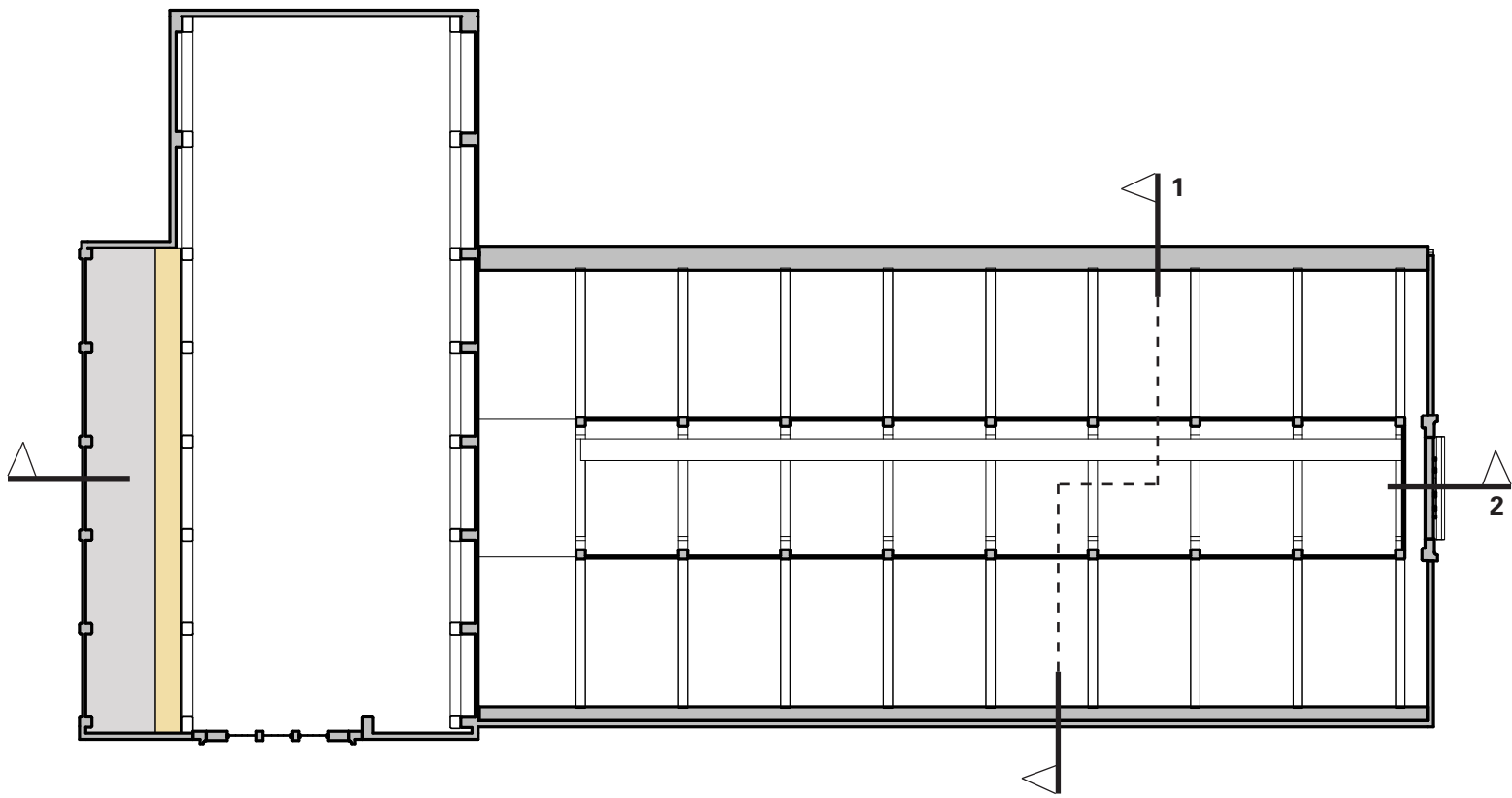
OCCUPANT LOAD FACTOR PER SBC TABLE 1004.1.2

FUNCTION OF SPACE	OCCUPANT LOAD FACTOR
ASSEMBLY UNCONCENTRATED (TABLES AND CHAIRS)	15 SF PER OCCUPANT
ASSEMBLY (EXHIBIT GALLERY AND MUSEUM)	30 SF PER OCCUPANT
EDUCATIONAL SHOPS AND OTHER VOCATIONAL	50 SF PER OCCUPANT
SKATING RINK	50 SF PER OCCUPANT
ACCESSORY STORAGE AREAS, MECHANICAL EQUIPMENT AREAS	300 SF PER OCCUPANT

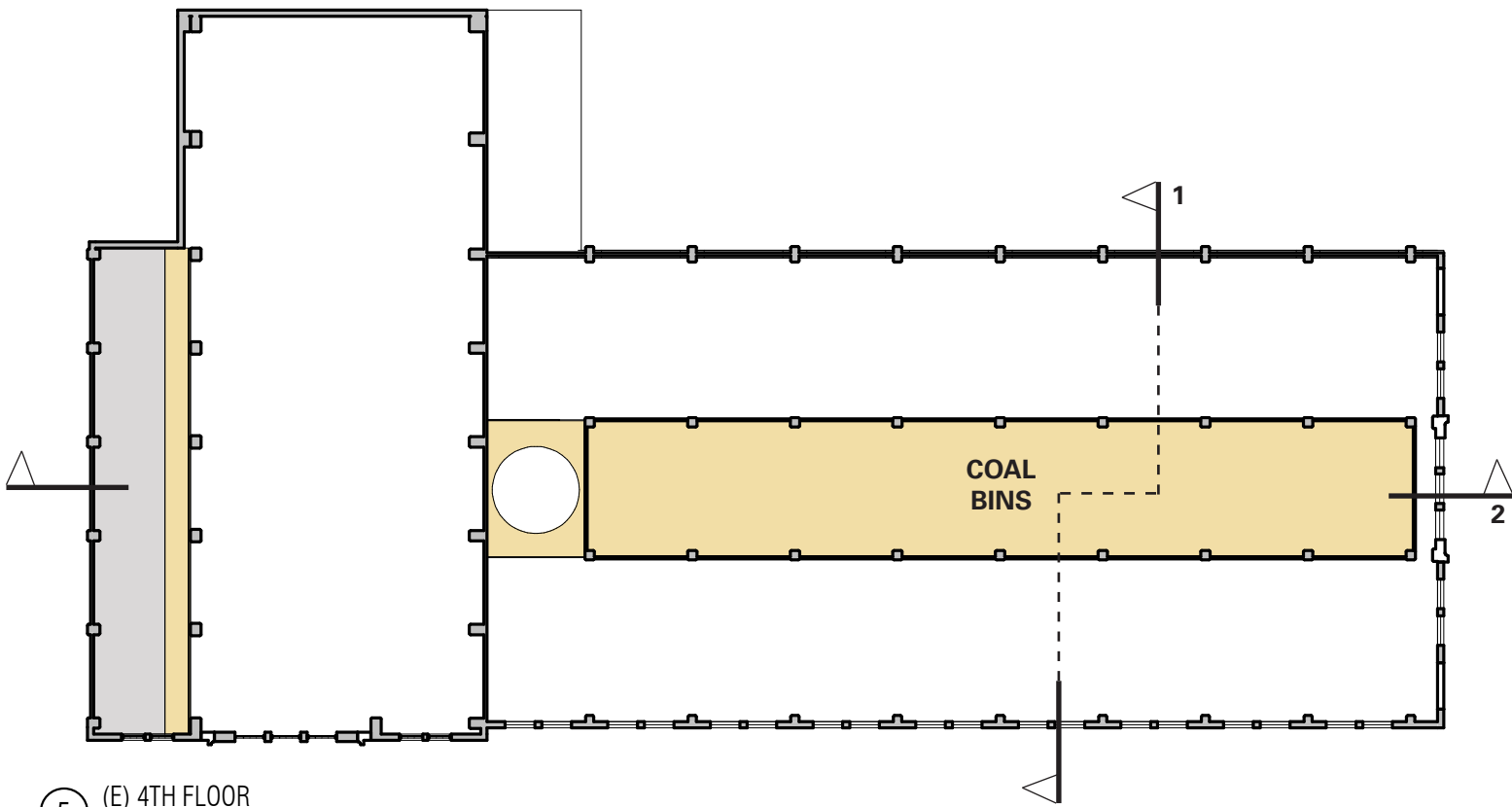




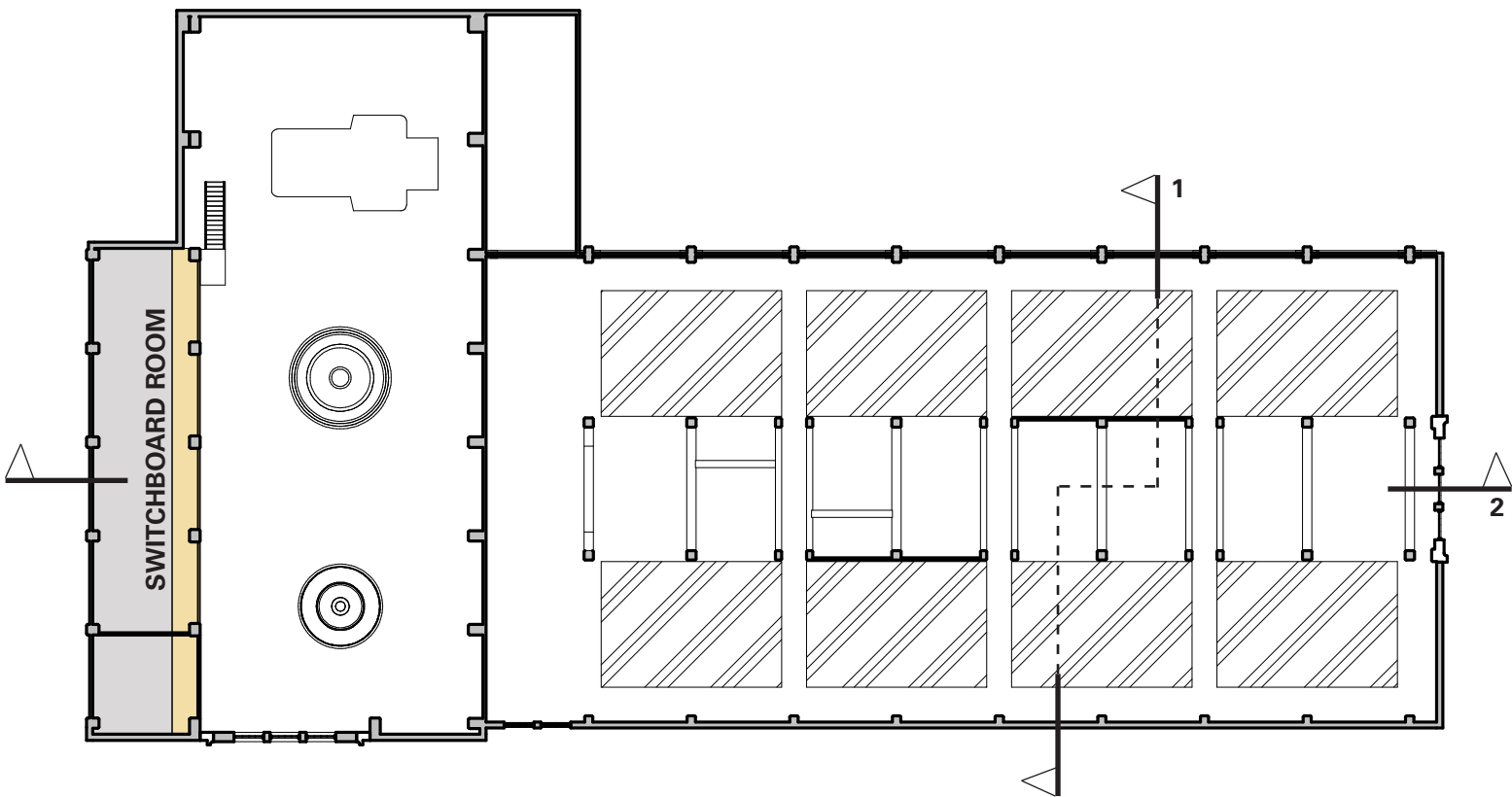




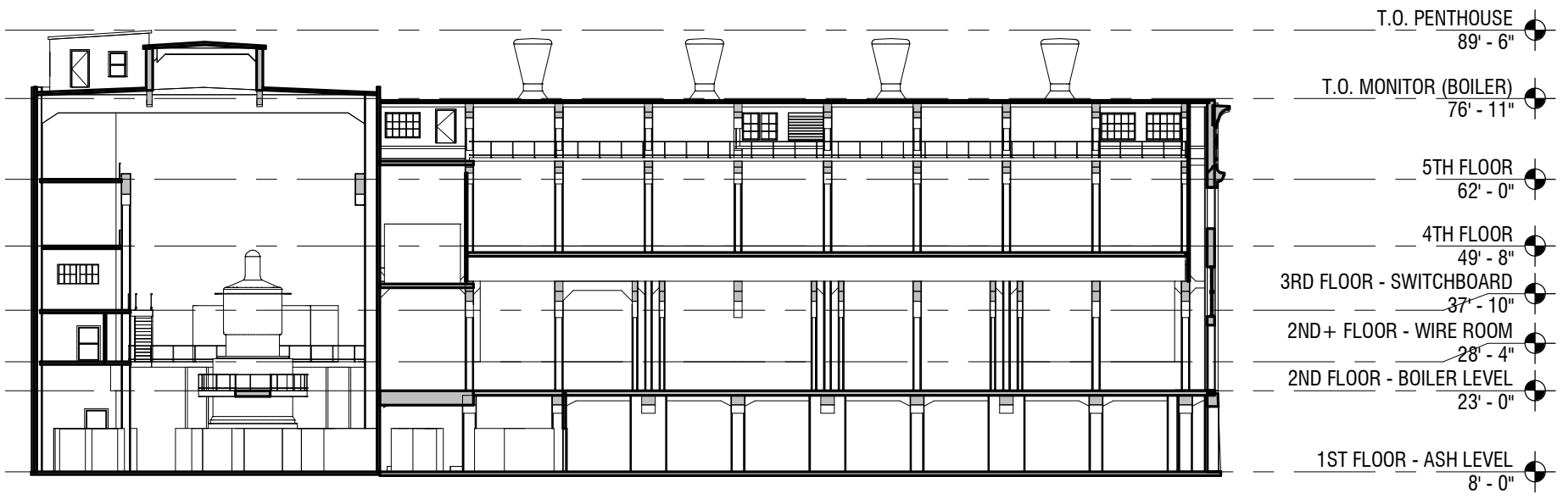
6 (E) 5TH FLOOR
1" = 30'-0"



5 (E) 4TH FLOOR
1" = 30'-0"



4 (E) 3RD FLOOR - SWITCHBOARD
1" = 30'-0"



1 (E) LONGITUDINAL SECTION
1" = 30'-0"



2 (E) SECTION THROUGH BOILER ROOM
1" = 30'-0"